

COMMUNITY **IMPACT** REPORT



Care Partners
an affiliate of the Oregon Nonprofit Hospice Alliance



2022 BOARD OFFICERS

Elizabeth Fischer, MS, CSA
President
Senior Care Advocate,
Retired

Laurabeth Ragozzino
Vice President
Director, In Lumino Sanctus

Christopher Hudson, MBA, CSFS, REBC
Secretary
Senior Manager Regence
BlueCross/BlueShield OR

Kathy Barclay, CPA
Treasurer
Financial Professional,
Retired

2022 BOARD MEMBERS

Jhoan Perras-Lemense, MS, PMP
Senior Project Manager

Julie H. Smith, LCSW, M.Div., AP-BCC
Healthcare Chaplaincy &
Episcopal Clergy, Retired

Elaine Denning, MBA
Healthcare Executive, Retired

Stephanie Brandt
Director of Community
Relations, The Springs at
Carman Oaks

Elizabeth Jessop, JD
Owner, Law Office of
Elizabeth M Jessop

Teresa Goodell, RN, PhD
Clinical Nurse Specialist
& Educator

Vance Navarrette, MS
IT Professional,
Retired

Bert Hoffbeck
Company Controller,
JMS Wind Energy, Inc.

2022 marks our 40th year

of operations as a nonprofit providing exceptional serious illness and end-of-life care to the greater Portland community. We have weathered many challenges over the years, and back in 1982 we had no premonition that a 2-year pandemic lay ahead of us. Still, we have persevered! Thanks to the heroic efforts of our staff and volunteers, we have continued to provide in-person care in private homes and residential communities despite a host of restrictions and resource constraints. We moved our grief support groups online and put together our first online caregiver support group, both of which are free and open to anyone. We offered the use of iPads for families unable to connect in person. Our volunteers have also continued to organize activities like a fishing trip or a private concert to fulfill special wishes of our patients.

Thanks to our donors and supporters, we are facing 2022 with a sense of optimism and commitment to continuing services for the next 40 years! We recently moved to a more accessible and visible location and are excited about restarting in-person events in the spring.

Later in the year, we'll be celebrating our 40th anniversary at the beautiful Jenkins Estate in Beaverton. Please save the date: **Sunday, October 9 at 4:30 pm**. We look forward to being together once again and renewing the community connection that makes us all stronger, together.



Tracy Villarreal
CEO

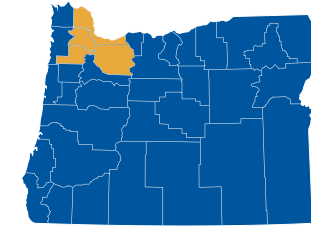


Elizabeth Fischer
President

2021 HIGHLIGHTS



354
Patients



Patients by county:

64% Washington
19% Multnomah
11% Clackamas
4% Columbia
2% Yamhill



50
Staff members
on the Care Partners team



1,410
grief support calls to
family members



42
Volunteers
1,961 hours of their time
89% of those hours were
in direct support of patients
and families



130,265
miles driven serving our patients



346
music or art therapy visits



OUR VISION

To be the leading community-based non-profit hospice and palliative care service honoring the unique needs of people during serious illness, end of life or the loss of a loved one

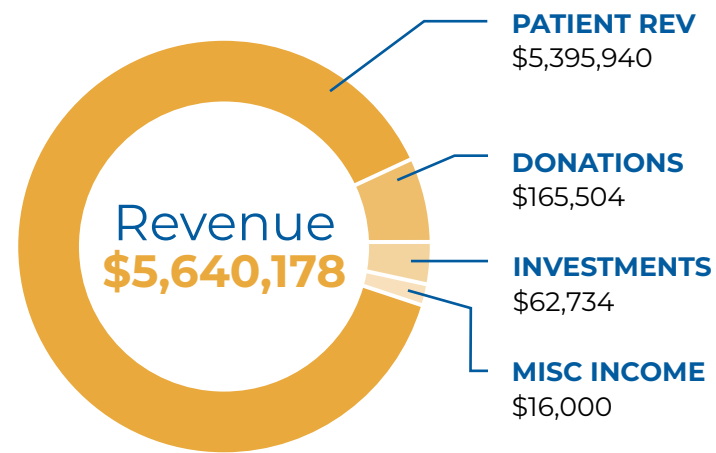
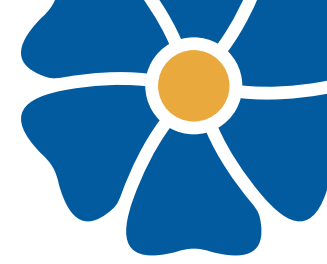
OUR MISSION

Exceptional Care,
without Exception

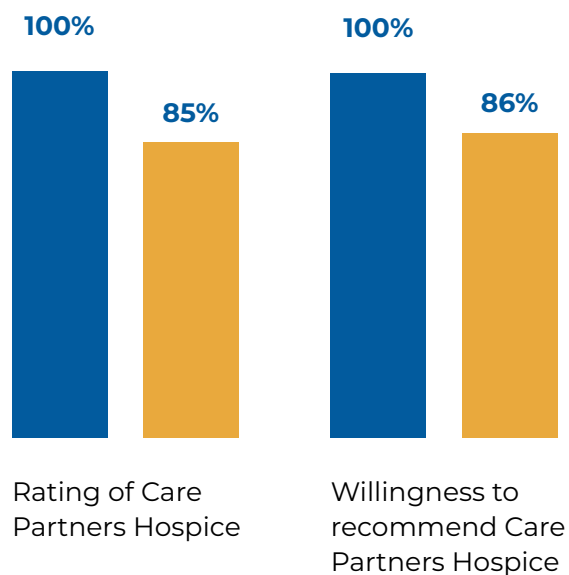
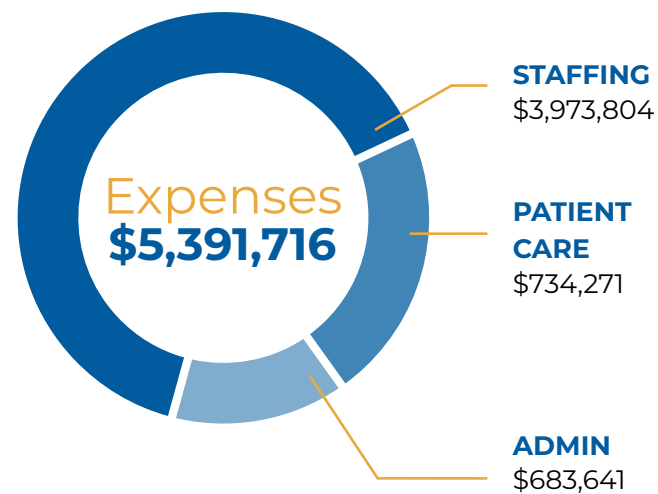
OUR VALUES

Collaboration
Innovation
Leadership
Commitment to Excellence
Integrity
Stewardship
Community Engagement

BY THE NUMBERS



Excludes Government Stimulus funds

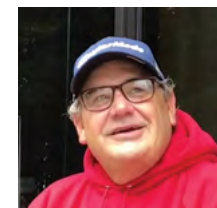


This is data from the Medicare CAHPS (Consumer Assessment of Healthcare Providers and Systems) hospice survey for Q4 2021. The survey is filled out by the patient's family, primary caregiver or legal representative 2 months after the patient has passed away.

■ Care Partners ■ National average

See how our promise of exceptional personalized care is expressed in our community. Two of the patients on our service graciously agreed for us to share their identities and thoughts about Care Partners. We are tremendously grateful for their openness on our behalf.

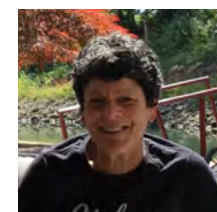
Dwight Boss



Dwight is a patient on our Heart Failure Focused Care program. He told us that he wanted to actively engage with his care team in managing his illness, and together we mapped out a plan that has allowed him to lose weight and engage in physical activity while keeping his symptoms under control. He's been

writing about his eventful life as a professional athlete, and even got out on the golf course for the first time in years. Dwight's social worker has also been helping meet his needs beyond healthcare, including stable housing and vehicle maintenance. His entire care team has formed a support group he can count on every day.

Jeanne Lamont



Dr. Jeanne Lamont was a patient on our Cancer Focused Care program for several months, but before that she was also our hospice physician until she retired a few years ago. As a doctor, Jeanne carefully weighed the pros and cons of continued treatment relative to the suite of advanced supportive care options we offer on our hospice service, and she decided that her quality of life would be best with us. She wanted to spend time with her family and friends, enjoy local outings, and take a much-anticipated holiday to a

beachfront resort. Her care team did their utmost to honor her wishes and help make them a reality.

In addition to her roles as patient and physician, Jeanne was an anonymous donor funding monthly lunches for our staff before and during the pandemic. She knew that the break time and the acknowledgement it represented was really important as stress continued to build for all healthcare workers. Her final gift is allowing us to continue this tradition for another year and support our ongoing operations.

Thank You 2021 Donors!

- | | | | | | | | | | | | |
|-------------------|-----------------------------|------------------------|---------------------------|---------------------------|-------------------------|-------------------------|-------------------------|----------------------------|---|----------------------------|--------------------------------------|
| Sandra Affleck | Phyllis Andrew | Barrett Planning Group | Winnie Beu | Larry and Bonnie Bliesner | Tracy Bradley Washburn | Debra and Paul Brodie | Helen and Dean Campbell | John and Juanita Coparanis | June Dawson | Amy Erickson | Elizabeth Fischer |
| Mishal Albassam | Gloria Anima | John Baumberger | Sylvia Biggs | Lynda Borgacz | Kelley Brand | Hannah Bruckbauer | Jollie Carlson | Patricia Cox | Rebecca Day | F.S and N.M Ervi | Mary Flanagan |
| Jennifer Allcroft | Anonymous | Doris Beck | John M Bissonnette | Laurel Bowling | Harriet Tauber Brewster | Carroll and Pam Buckley | Wendy Chapman | John Crowley | Delbert and Stella Schrag | Tom Faricy | Carol Foley |
| Bonnie Altshuld | Betty Apfel | David Bedard | The Blackbaud Giving Fund | Kathy Boyen | Mary Ellen Brinkerhoff | CAF - CyberGrants | Maria Chitsaz | Elizabeth Crumpacker | Fund of the Oregon Community Foundation | Linda and Ronald Fergusson | Sally Follen |
| Jeana Anderson | Janet Babich | Benevity Inc | | Bonnie Boyer | | Pamela Camacho | Megan Christoph | Raynelle Damon | William Dunbar | Fidelity Charitable | Gary Abbott and Jean Foote |
| | Katherine and James Barclay | | | Kathy Bradley | | | Janis Clark | Craig and Jilda Danielson | Sandra Emmons | Melvin and Marie Finegan | Forest Grove United Church of Christ |

NEW BUILDING & GARDEN



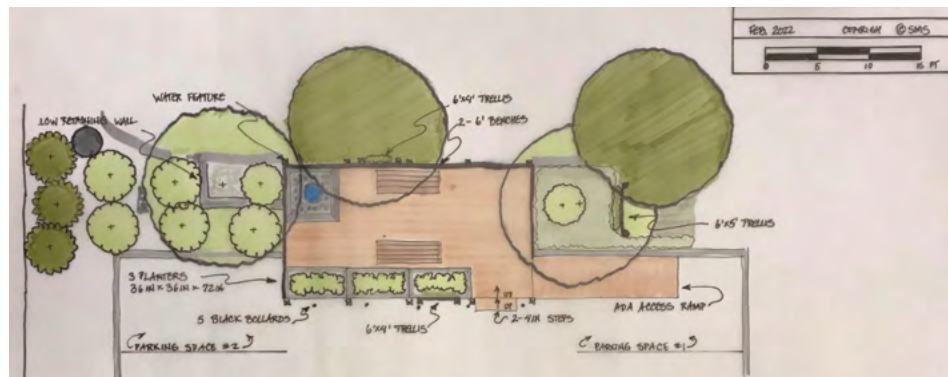
Care Partners is excited to announce our new office location in Cedar Mill at 12670 NW Barnes Rd! Our new building is shared with only one other tenant who is on the second floor. Now we are 10 minutes from highway 26 or 217 and in a great neighborhood with a mix of residential, retail and small offices – ready to welcome visitors in person. Feel free to drop in for a conversation, whether it's about caregiving, health issues, working through

grief or other topics. Care Partners is more than a hospice and palliative care provider – we want to be the trusted community source for unbiased information on managing serious illness.

One example of how our virtual and in-person services connect is in using music to communicate with someone with later-stage dementia. We work with music therapist Lisa Peterson to provide caregiver training online, and we also offer a selection of CDs (donated to us by a volunteer) that are available free of charge using Lisa's formula for determining the right period and type of music for each person. Care Partners has many other

resources available, and we look forward to seeing you!

The landlord at our new location has kindly offered us some space behind our building to create a small garden open to the community. We are envisioning an area for peaceful contemplation and remembering loved ones. Transforming the edge of a parking lot will take some doing, but we already have a design, created by Stacey Stewart at Edensgate, that includes a water feature with seating, perennials, shrubs and small trees.



The preliminary budget for implementing this design is \$20,000, and we are looking for community contributions to help us meet this goal. Once the funds are available we can break ground on the project. Please consider a donation to make the garden a reality—we hope that it will enhance well-being for all who visit.

EASY WAYS TO SUPPORT CARE PARTNERS

PARTNERSHIP PROGRAM



You can make your donations go further by joining our Partnership - a monthly giving program that supports the unreimbursed services that we offer as a nonprofit. Having a base of regular monthly gifts allows us to implement expanded or new programs knowing that their funding will be sustained, despite the ongoing challenges in healthcare even in a "post-COVID" environment. You can sign up online in less than 5 minutes at www.carepartners.org/donate/ as a Friend (\$25), Advocate (\$50) or Champion (\$100), or choose any amount that feels comfortable.

Benefits of the program for you include:

- Emailed updates on the impact your gift is making
- Secure, worry-free transactions from our card processor
- The ability to change or suspend your donations at any time
- Statements that cover all your gifts for tax purposes

Your monthly donation will go to supporting members of your community as they navigate through one of the most challenging times of their lives.

THE GROVE LEGACY PROGRAM



"We are not held up by living soil like trees, but we are sustained by the coherence, the living meaning, that we experience in our communities"

– Gary Gunderson

Are you thinking about the impact you want to leave on the future, without affecting your day-to-day? For many people, a legacy gift is the way to accomplish this goal. Care Partners started The Grove thinking of how Redwood trees nurture each other and the next generation through their intertwined roots. Individual trees are inseparable from their grove community, held up by their collective strength.

Being part of the Grove includes you in a group of Care Partners supporters who are forming a future community by a pledge made through their will or trust. It is the simplest form of planned giving. All you need to do is ask your estate attorney or financial advisor to set aside a fixed amount or a percentage of an asset, with the confidence that your choices can always be modified. The asset can be a retirement account, a life insurance policy, or property. While you do not have to notify Care Partners of your intentions, a short note is greatly appreciated. A notification letter format is available on our website along with further details and giving options.

Thank You 2021 Donors!

Barbara Foster	Alberta Fry	Cheryle Gardiner	Susan Goessens	Gail Green	Deva Harris-Williams	John and Peggy Hintz	Carol Howe	Shirley Jensen	Edward Kirk	Gail Macnab	Mitchell Taylor Giving Fund
Fraternal Order of Eagles Cornelius 4177	M.H and K.R Fuhrman	Mary and Ken Gates	Martha Goetsch	Sharlene Gregg	Lorita Havel	Karen Hoke	Clarence Howell	Elizabeth Jessop	Kay and J.R. Kirkbride	Dorothy Manfull	Barbara Mock
Victoria Frazier	Mary Fuller	Gary and Shelley Nuss Giving Fund	Teresa Goodell	Luella Hall	Bonnie Heidbrak	Ryan Holznagel	Madeline Hubbard	Helga Jean Johnson	John and Linda Krafscic	Joanne McQuiston	Tammie Moe
Karen and Kurt Free	The Fur Fund	David Gibson	Linda Gratteri	David Hammond	Carrie Henry	Home Instead Senior Care	Christopher Hudson	Louise Johnson	Jeanne Lamont	Ann McWhorter	Carol Moore
Francis Frey	Oksana Fusselman		Phil and Peggy Crawburg	Shirley Handyside	Virginia Hilken	Lesley Hoopes	Chloe Hughes	Kirpal Kahlon	Curtis and Cindy Larson	Rebecca Mehringer	Pamelajeane Myers
				Larry Hansen	David Hill	Lisa Horowitz	Lynn-Marie Jackson	Sally Kamian	Norma Lock		Doris Nagel
						Shirley and Rick Hoskin		Radditz Karen	Erin Lolich		Jennifer Nash
								Kristin Kinnie			

Thank You 2021 Donors!

Navarrette
Charitable
Fund

Judy Neil

William G
Nelson

Christa
Nicholas

Louise
OConnor

Olive Bridge
Fund

Patricia Oram

Margaret
Oscilia

Robert Oster

Ron and
Marilyn Peltola

Sandra Percell

Jhoan Perras-
Lemense

Marvin and
Carol Faith
Peterson

Richard and
Kathy Pickwick

Michelle Pinson

Minda and
Steve Potter

Laurabeth
Ragozzino

Laura Ramos

Kelly Rampone

Kay Rasmus

Larry Raymond

Margery Reed

Samuel
Robinson

Sally Rudolph

Jay Russell

Robert and
Marylyn Russell

Julia Victoria
Salve

Carol Ann
Schaefer

Robert
Scherrer Trust

Judy Schnase

Schwab
Charitable

Janice Scott

William Scott

Elizabeth
Scrivner

Amanda Shafer

Jimmy
Shannon

Jenny Sherman

Kellie Simpson

Jan Smith

Shirley Smith

Vicki Snodgrass

Katherine M
Stevens

Cynthia Storrs

Ed and Joyce
Stowe

Margaret
Studebaker

Laura
Sutherland

Terry Ann
Smith

Heather
Thayne

Elaine
Thompson
McDaniel

Monica
Thursam

Lynn and Eric
Tobar

Tim Trautman

June Tremain

Kristie
Trousdale

Jo Anne Tyson

Miki Van
Houten

Lynne
VanZonneveld

Tracy Villarreal

Jessica Vizcarra

Diane Walker

Kathleen Walsh

Ronald and
Andrea Wastier

Hambie Weber

Patricia Weiss

Mary White

Pat and Jeanne
Wieber

Deborah
Williams

Colleen Winter

Kathi Withers

Janet and Don
Wolf

Womens
Leadership
Council

Margaret Yoder

Patrick Zabel